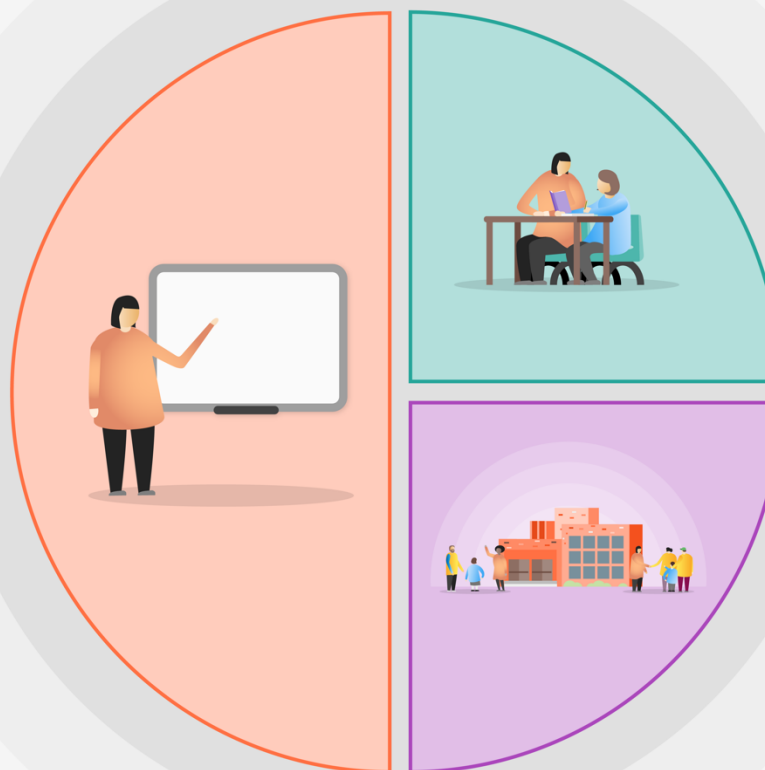


1 Teaching

- Quality First Teaching supported by evidence-informed CPD for teachers and support staff –improving working memory, use of knowledge organisers
- Baseline assessments – analysed to show gaps in learning and to inform future planning.
- Participation in the Nuffield Early Language Intervention Programme (NELI)
- Curriculum planned in English in Maths – curriculum essentials identified and taught/revisited across wider curriculum subjects.
- A broad and engaging curriculum that focuses on the development of language skills.
- Use of Accelerated Reader to ensure all pupils, in particular disadvantaged pupils, experience success and celebrate their own achievements
- Use of Star Reader and Star Maths as useful assessment tools to track progress for all groups of children
- Reduce workload (e.g. reduced meetings) during the assessment cycle to aid staff wellbeing
- Use of Microsoft Teams for staff training, allowing greater flexibility for staff to access training at home
- Increase the amount of training and support available to staff in the delivery of remote education/blended learning



2 Targeted academic support

- Pre-teaching used as a strategy across the school
- Teacher led intervention groups
- Teacher led Phonics intervention groups delivering targeted intervention for Year 2/ Year 1/EYFS
- Virtual meetings to support parents/carers of children with SEND.
- Pastoral staff to provide small group/1-1 support to assist pupils day to day.
- Small group tutoring delivered through the National Tutoring Programme

3 Wider strategies

- Whole school physical environment carefully planned
- Develop the new outdoor classroom in order to ensure enhanced opportunities for outdoors learning
- Increase the opportunities for outdoor sport and outdoor play
- Increase telephone support available to parents/carers